

Y-8635301

MOTORISED CHANGEOVER SWITCH 1-0-2 4P 63A AC1 INCOMING ON BOTTOM. 80-230VAC

Code	007Y-8635301
EAN	8430892333177

Product description

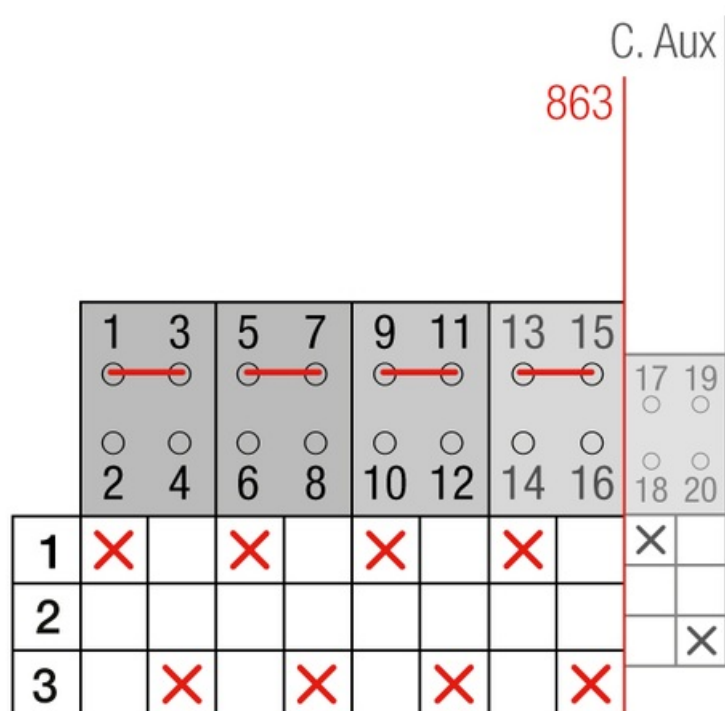
Motorised changeover switch 1-0-2 , 4 poles 63A AC22 with motor unit supply 80-230Vac . The supply incoming cables are connected on the bottom side of the unit and the load outgoing cables are connected on the top side. Size D1 dimensions 135x140x80, includes auxiliary contact 12A. Back plate mounting. Built-in internal links, mechanical and electrical interlock. Local emergency operation, includes removable padlockable handle. Display for switch position indication and operation counter. Impulse control logic. Protection against supply voltage failure . Cable clamp connection for wires 6-16mm².

Logistic data

Customs code	85365080
--------------	----------

Technical data

Poles	4
Y5 Type	86
Supply	80-230V AC

Connection

Dimensions

