

# YL863A101

MOTORIZED CHANGEOVER SWITCH 1-0-2 4P 160A INCOMING ON BOTTOM. 12V DC

<b>Code</b>	007YL863A101
<b>EAN</b>	8430892333405

## Product description

Motorised changeover switch 1-0-2 , 4 poles 160A with motor unit supply 12V dc . The supply incoming cables are connected on the bottom side of the unit and the load outgoing cables are connected on the top side. Size D2 dimensions 147x195x113, includes auxiliary contact 12A. Back plate mounting. Built-in internal links, mechanical and electrical interlock. Local emergency operation, includes removable padlockable handle. Display for switch position indication and operation counter. Impulse control logic. Protection against supply voltage failure . Cable clamp connection for wires 16-50mm<sup>2</sup>.

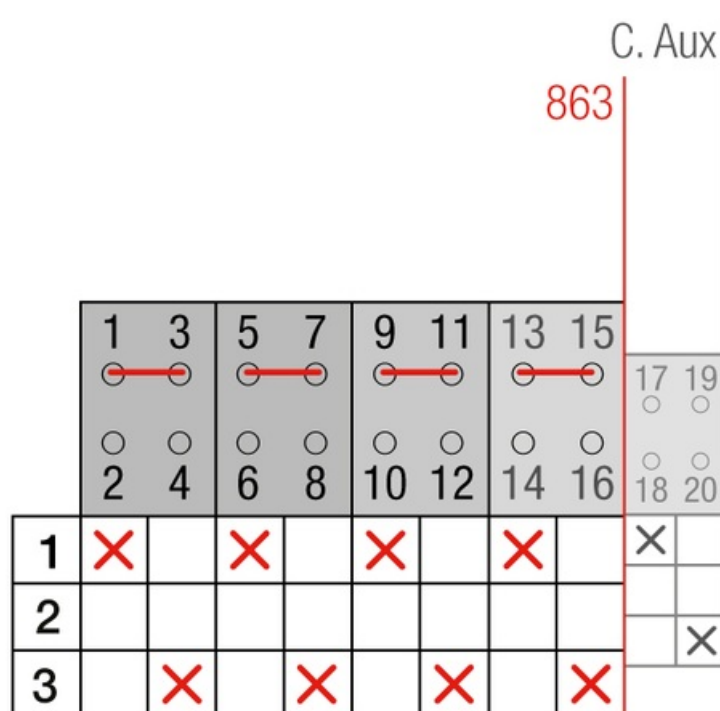
## Logistic data

Customs code	85365080
ETIM code	EC000216

## Technical data

Poles	4
Y5 Type	86
Supply	12V DC

## Connection



## Dimensions

