

# YL863B301

MOTORISED CHANGEOVER SWITCH 1-0-2 4P 200A INCOMING ON BOTTOM. 80-220V AC

<b>Code</b>	007YL863B301
<b>EAN</b>	8430892333474

## Product description

Motorised changeover switch 1-0-2 , 4 poles 200A with motor unit supply 80-220V ac. The supply incoming cables are connected on the bottom side of the unit and the load outgoing cables are connected on the top side. Size D3 dimensions 185x261x113, includes auxiliary contact 12A. Back plate mounting. Built-in internal links, mechanical and electrical interlock. Local emergency operation, includes removable padlockable handle. Display for switch position indication and operation counter. Impulse control logic. Protection against supply voltage failure . Terminal connection with tubular cable lugs M8 up to 120mm<sup>2</sup>.

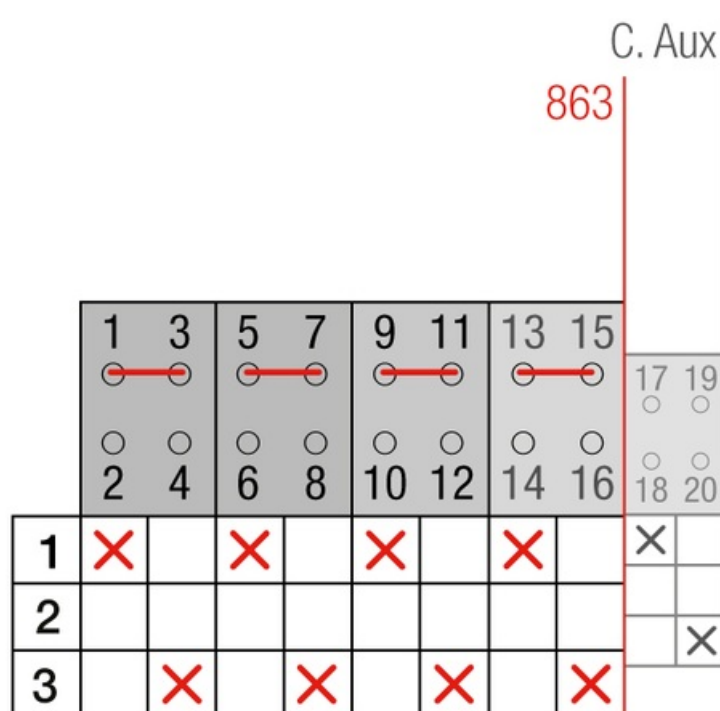
## Logistic data

Customs code	85365080
ETIM code	EC000216

## Technical data

Poles	4
Y5 Type	86
Supply	80-230V AC

## Connection



## Dimensions

